

Environmental Health Matters in Regional and Remote SA



SA Health

September 2017

Health Protection Operations

Phillip Graham

Coordinator Aboriginal Environmental Health



**Government
of South Australia**

SA Health

AEHW Strategy

- Aboriginal Environmental Health Workers identified and employed by local ACCO's
- Engage with the Community in promoting Environmental Health Practices.
- SA Health Maintain AEHW in all participating communities in order to provide services such as the maintenance and education in:
 - Safe water
 - Food safety
 - Pest control
 - Waste Management
 - Household Hardware Maintenance
 - Effluent Disposal
 - Dog Control
- Promote the broad Environmental Health positives across communities

Where we work



Who we work with

- Aboriginal Community Controlled Organisations
- SA Health employees working within the ATSI PHC (Aboriginal and Torres Strait Islander Primary Health Care) areas and other relevant areas
- Housing SA employees
- Regional and Remote SA Human Services and Family and Children's service provider staff

A Current project 2016-19

- > Deliver Indigenous Environmental Health Cert II and Cert III for existing SA Health employees across our regions to strengthen their current knowledge within their roles.
- > Both Certificate II & III are being contextualised to ensure that learning is supported by applying relevant and current local issues to each cohort.

What's in it for the participants:

- > Elevated skills and knowledge relevant to the work of environmental/community health care practitioners
- > Frame the structure for career/educational pathways for employees
- > Peer to Peer relationships between workers via collaboration, networking and sharing knowledge with each other

What will it achieve

- Transition awareness of environmental health across communities and broader acknowledgement of the importance of environmental health
- Take up of strategies that deal with resolving place based environmental health issues will result in healthier and safer communities
- Benefits to other service providers in terms of alleviating issues from lack of environmental health strategies



Participants take away -

- ✓ Builds individual participant capacity and workforce development within the environmental health arena
- ✓ Supports SA Health program providers to strengthen their commitment to environmental health within their geographical areas
- ✓ Support and promotes accountability
- ✓ Focuses on and works towards sustainability
- ✓ Addresses the identified needs specific to an Indigenous cohort

Future partners in S.A.



Snapshot of what we have been doing



SA Health



**Government
of South Australia**

SA Health

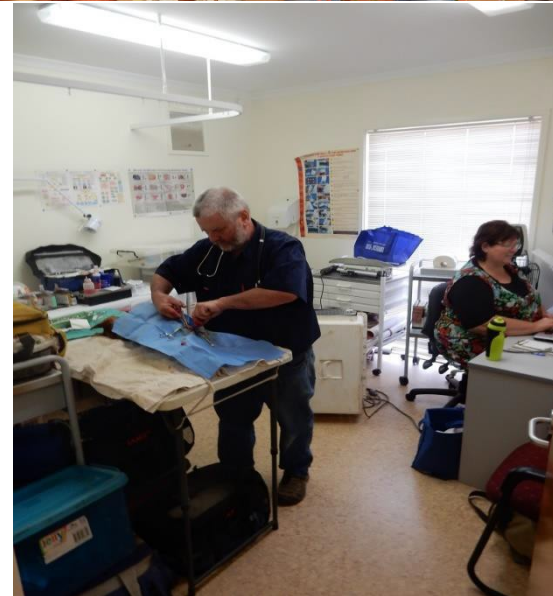
Aboriginal Environmental Health Workers in SA





Pika Wiya

- ❖ Maree
- ❖ Copley



Pika Wiya

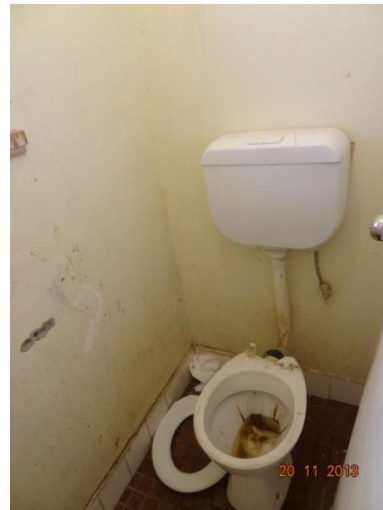
❖ Port Augusta



Pika Wiya

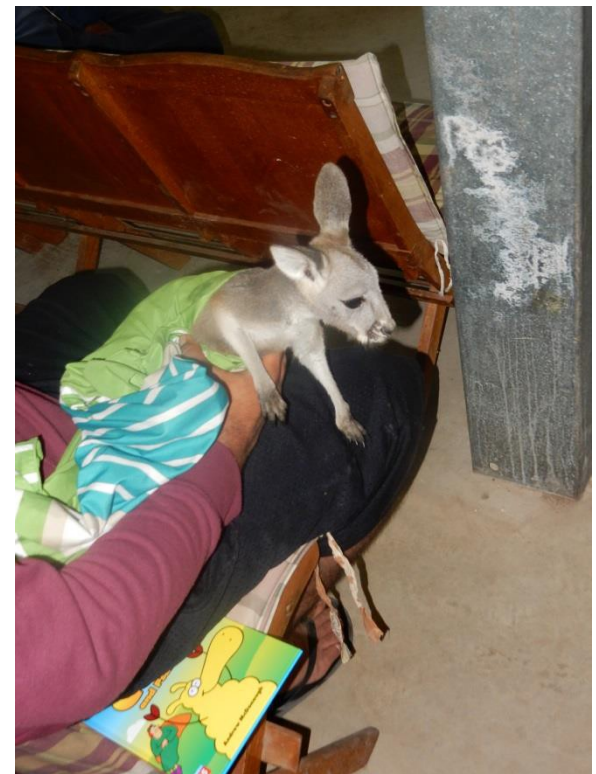


- ❖ Port Augusta
- ❖ Davenport



Ceduna Koonibba

- ❖ Ceduna region
- ❖ Vet
- ❖ Water Testing



Ceduna Koonibba



Umoona Tjutagku



Scotdesco EH Projects



Highlight of Scotdesco

Our Hospitality/Catering Staff had the privilege cooking for the Hon. Prime Minister Malcolm Turnbull in October 2016. On that night we catered for 85 guests, if we can achieve what we achieved in the limited amount of time to prepare for the night with PM Malcolm Turnbull and 85 guests, we can achieve anything. The setting and the 3 course meals was appreciated and enjoyed by those who attended this special event.

Group bookings are the only way you can access our hospitality and treat your groups taste buds with our home style cooking. With our 40 bed shared accommodation facilities available for Corporate meeting/conferences.

Payment by EFT only, we will invoice your Company with a 14 day account.



Scotdesco
Aboriginal
Corporation



Home cooked meals prepared by our experienced Hospitality/Catering Staff . We cater for all your dietary needs when staying with us. Our aim is to please your taste buds so you return.

Opening Hours
Monday to Friday 8:30 am to 4:00 pm
Booking only
Scotdesco Community
Eyre Highway Bookable SA 5690
100km West of Ceduna
100km East of Yatala

Specialising in Saltbush Roast Lamb and saltbush scones. With our great range of expresso coffee's.

Phone: 0886 256 222
Fax: 0886 256 069
E-mail: scotdesco.ceo@outlook.com

Menu
Natural
Resources
Management
Group
20th
to
23rd
August
2017



Scotdesco



Nunyarra (Whyalla)





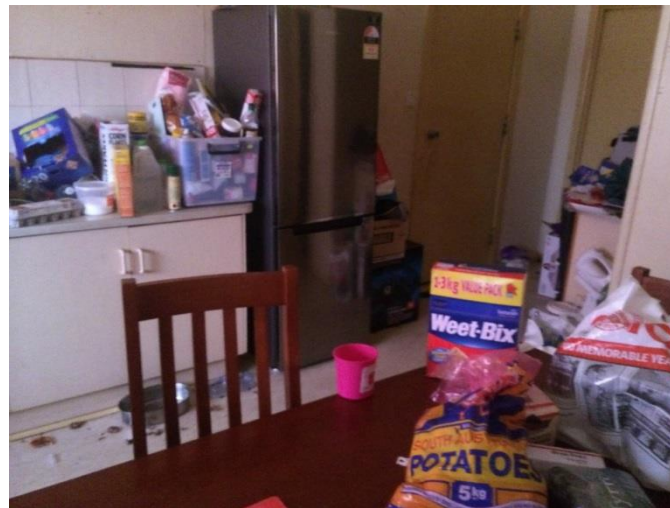
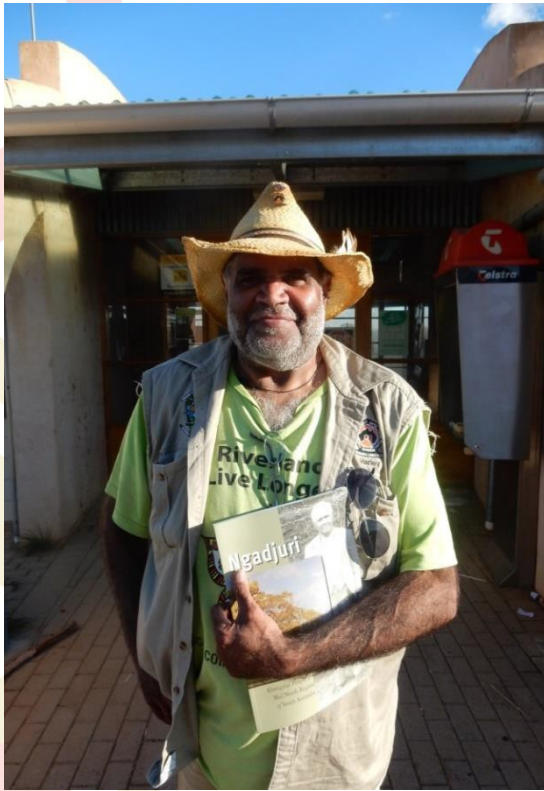
Point Pearce



Point Pearce EH Projects



Gerrard Community



Murray Bridge – Raukkan -

❖ Ngarrindjeri Regional Authority



APY Lands



APY Lands



No Germs on Me



No Germs on Me



SIDE 1

SIDE 2



Highlight



Didya wash your hands?



